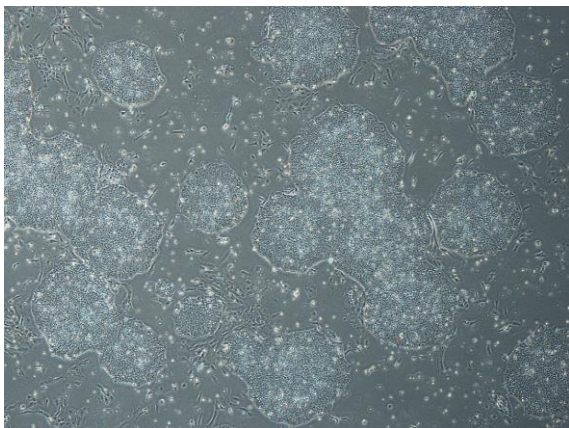
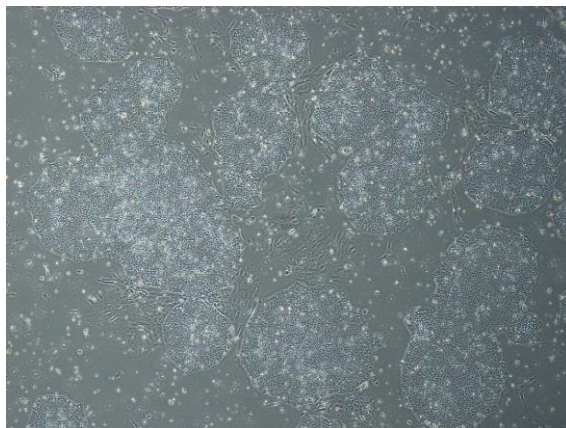


【 CiRA-j-1626 】 Morphology of iPSC colonies

CiRA-j-1626-A: passage-2



CiRA-j-1626-B: passage-2



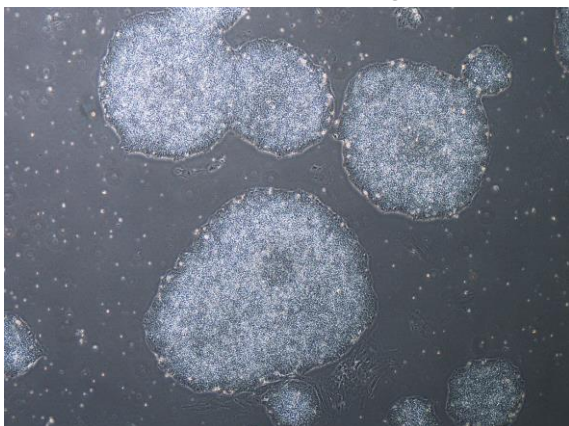
CiRA-j-1626-C: passage-2



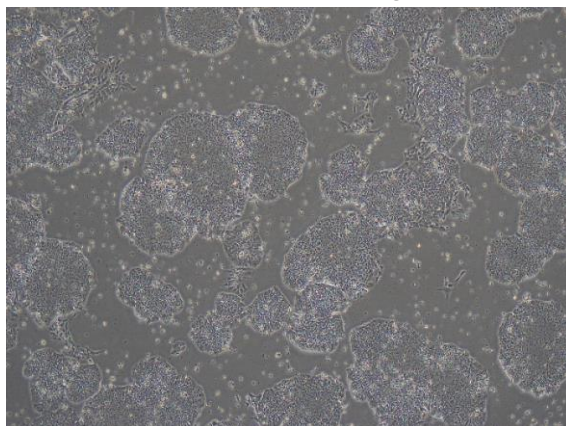
CiRA-j-1626-D: passage-2



CiRA-j-1626-E: passage-2



CiRA-j-1626-F: passage-3



(All images were captured at 4x magnification)